

3950 ANCHUCA DRIVE

LAKELAND, FL



**NEED
WAREHOUSE
SPACE?**

GROUND LEVEL WAREHOUSE

Only 3.3 miles from full interchange of Interstate-4

3950 Anchuca Drive provides ground level space that may be used for office, warehousing or light manufacturing. Units offer flexible space options and unit configurations.

Specifications

- 27,300 sq. ft. ground level building
- 1,820 sq. ft. minimum
- 12'x14' overhead doors
- 18' clear height
- Web accessible security cameras
- Overhead fire sprinkler system
- LED Lighting

Contact:

Greg Ruthven, CCIM
(863) 581-4639 cell
greg@ruthvens.com

Matt Ruthven, CCIM
(863) 581-4637 cell
mruthven@ruthvens.com

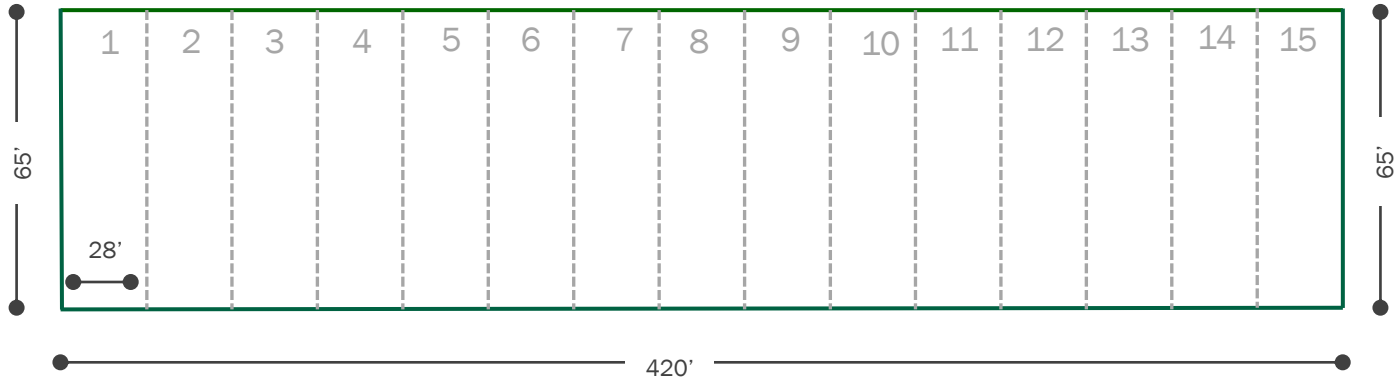
Brandon Clark
(863) 450-9540 cell
bclark@Ruthvens.com

Leasing Warehouse Space for Distribution & Manufacturing
ruthvens.com

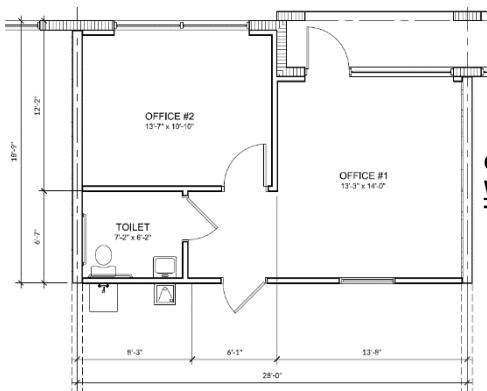
3950 ANCHUCA DRIVE

LAKELAND, FL

We build more than warehouses...we build relationships!

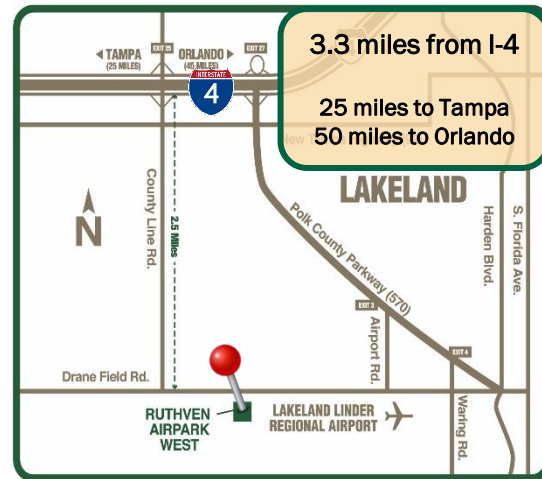


A N C H U C A D R I V E



Sample Office Layout

Office 527 sq. ft.
Warehouse 1,293 sq. ft.
Total 1,820 sq. ft.



Central Florida's
Warehouse Specialists

863-686-3173
ruthvens.com



Greg Ruthven, CCIM
Mobile: (863)581-4639
greg@Ruthvens.com



Matt Ruthven, CCIM
Mobile: (863)581-4637
mruthven@Ruthvens.com



Brandon Clark
Mobile: (863)450-9540
bclark@Ruthvens.com