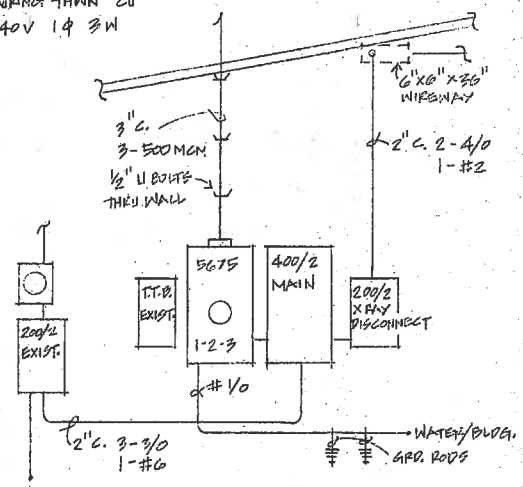


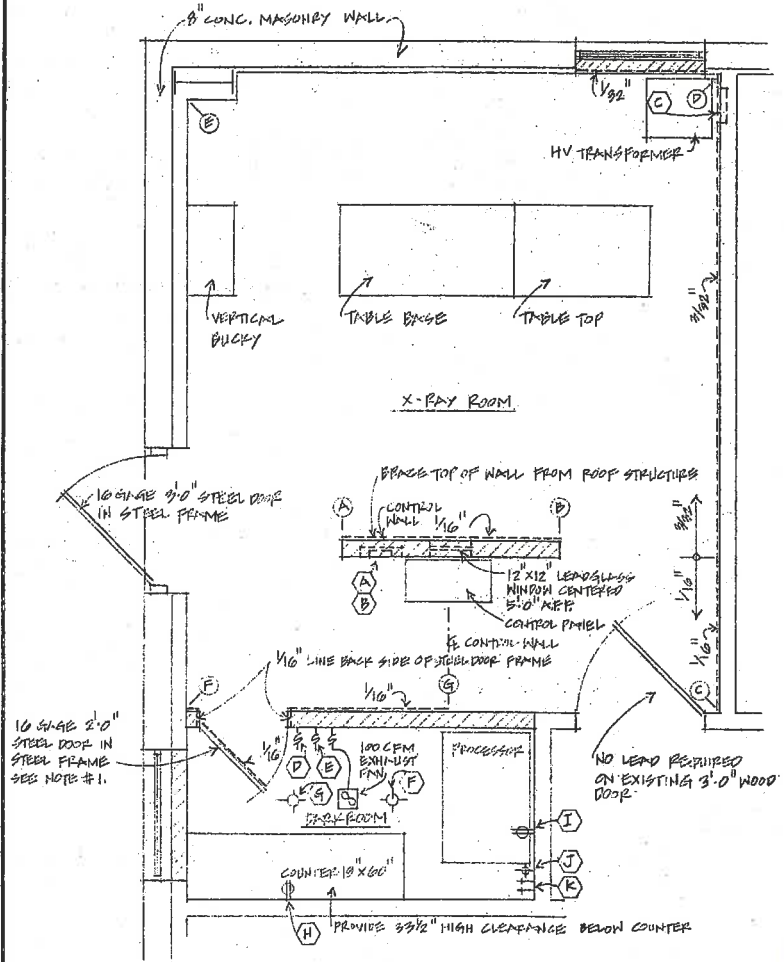
ELECTRICAL & PLUMBING LEGEND

- (A) 240 VAC, 100 AMP, 1 Ø disconnect, recessed, facing control, bottom of disconnect 5' AFF; see power requirement sheet for wire size and distribution transformer capacity.
- (B) 12 x 12 x 4 J Box with cover, recessed, just above floor, facing control; with two (2) 2" knockouts with chase nipples, locknuts, and bushings in cover.
- (C) 12 x 12 x 4 J Box with cover, recessed, just above floor, facing H.V. Transformer; with two (2) 2" knockouts with chase nipples, locknuts, and bushings in cover.
- (D) Light switch at normal height to control safelight fixture F.
- (E) Light switch at 5 1/2' above floor to control white light fixture G.
- (F) Light bulb socket in ceiling, controlled by switch D.
- (G) White light fixture in ceiling controlled by switch E.
- (H) Duplex receptacle above counter.
- (I) 120 VAC, 15 AMP dedicated receptacle 4 1/2' AFF.
- (J) 3" PVC drain with P trap - not over 12" AFF.
- (K) Two (2) cold water hose bibs 4' AFF.

ALL WIRING THWN CU
120/240V 1 Ø 3 W



ELECTRICAL RISE DIAGRAM
NTS WEST END OF BUILDING

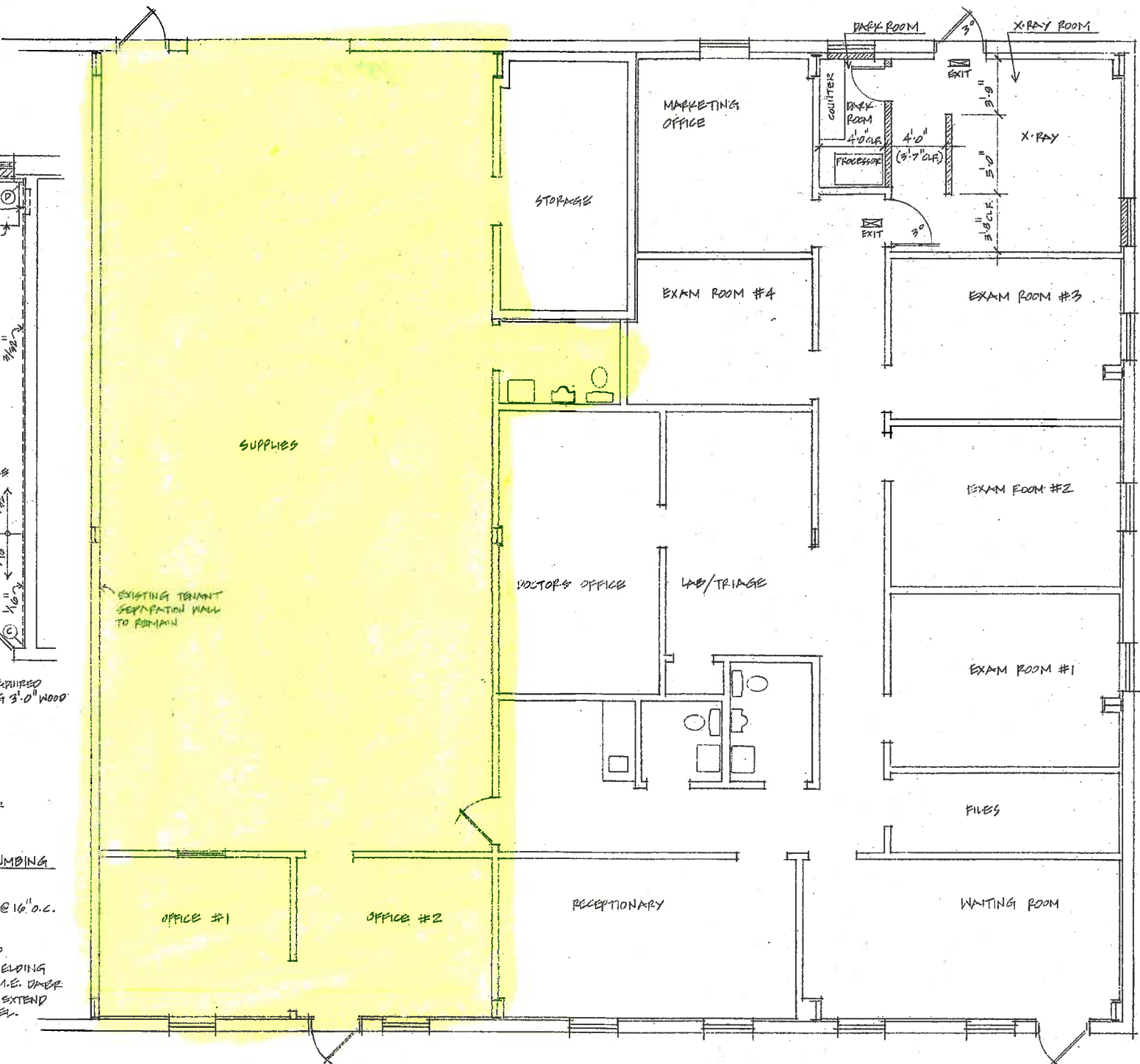


ENLARGED PLAN SHOWING LEAD BARRIER, ELECTRICAL, PLUMBING
1/2" = 1'-0"

NEW GYP. BR. PARTITION, 1/2" GYP. BR. ON 2x4 STUDS @ 16" O.C.
LEAD BARRIER ON BACK SIDE OF GYP. BR.

END POINT OF PARTITION, LETTERS CORRESPOND TO END POINT LETTERS IN "RADIOGRAPHIC ROOM SHIELDING EVALUATION" REPORT PROVIDED BY JOHN PARTON, M.D. DIVER MEDICAL PHYSICIST. ALL LEAD SHEETING SHOULD EXTEND TO A HEIGHT OF AT LEAST 7'-0" ABOVE FLOOR LEVEL. SEND REPORT PRIOR TO INSTALLATION.

- GENERAL NOTES:**
- 1) DOOR TO DRFX ROOM SHALL BE FRAMED BY 1/4" LEAD AND SHALL HAVE THRESHOLD BY WEATHERSTRIP. APPLY WEATHERSTRIP ON FACE OF STOP AT HEAD & SILEX JAMB. APPLY WEATHERSTRIP TO FACE OF FRAME ON HINGE JAMB.
 - 2) INSTALL REFLECTIVE FILM ON 2 WINDOWS PRIOR TO CONSTRUCTION OF PARTITIONS.
 - 3) DRFX ROOM - VINYL TILE FLOOR; PAINT WALLS HIGH GLOSS ENAMEL-WHITE; VERIFY BATT INSUL. COMPLETELY COVERS CEILING.
 - 4) DUCT EXHAUST FAN TO EXTERIOR.
 - 5) REMOVE EXISTING SUSPENDED CEILING/LIGHTS IN X-RAY RM. AS REQUIRED BY ADDITION OF CONTROL WALL.



FLOOR PLAN
1/4" = 1'-0"

- LEGEND:**
- ===== EXISTING TO REMAIN
 - ===== NEW GYP. BR. PARTITION. SEE ENLARGED PLAN FOR LEAD BARRIER LOCATIONS

GENERAL NOTES:
SCOPE OF WORK IS LIMITED TO IMPROVEMENTS NECESSARY FOR RADIOGRAPHIC ROOM & DRFX ROOM.

DATE: _____

REVISION: _____

110 South Macdill Avenue, Suite 202
Tampa, FL 33607
Phone: 813-971-5377
Fax: 813-971-5378
E-mail: info@wallis-kurphey-roymington.com

Wallis Kurphey Roymington ARCHITECTS, INC.

5675 NEW TAMPA HIGHWAY
FOR THE IMPROVEMENTS FOR
PATIENT IMPROVEMENTS FOR
INDUSTRIAL MEDICINE CENTER

DWG. TITLE

DR. BY: JMM

CHKD. BY:

DATE: 9-7-95

SCALE:

PLOT NO: 154

DWG. No:

REV. 9-10-95

SHT: 1 OF 1