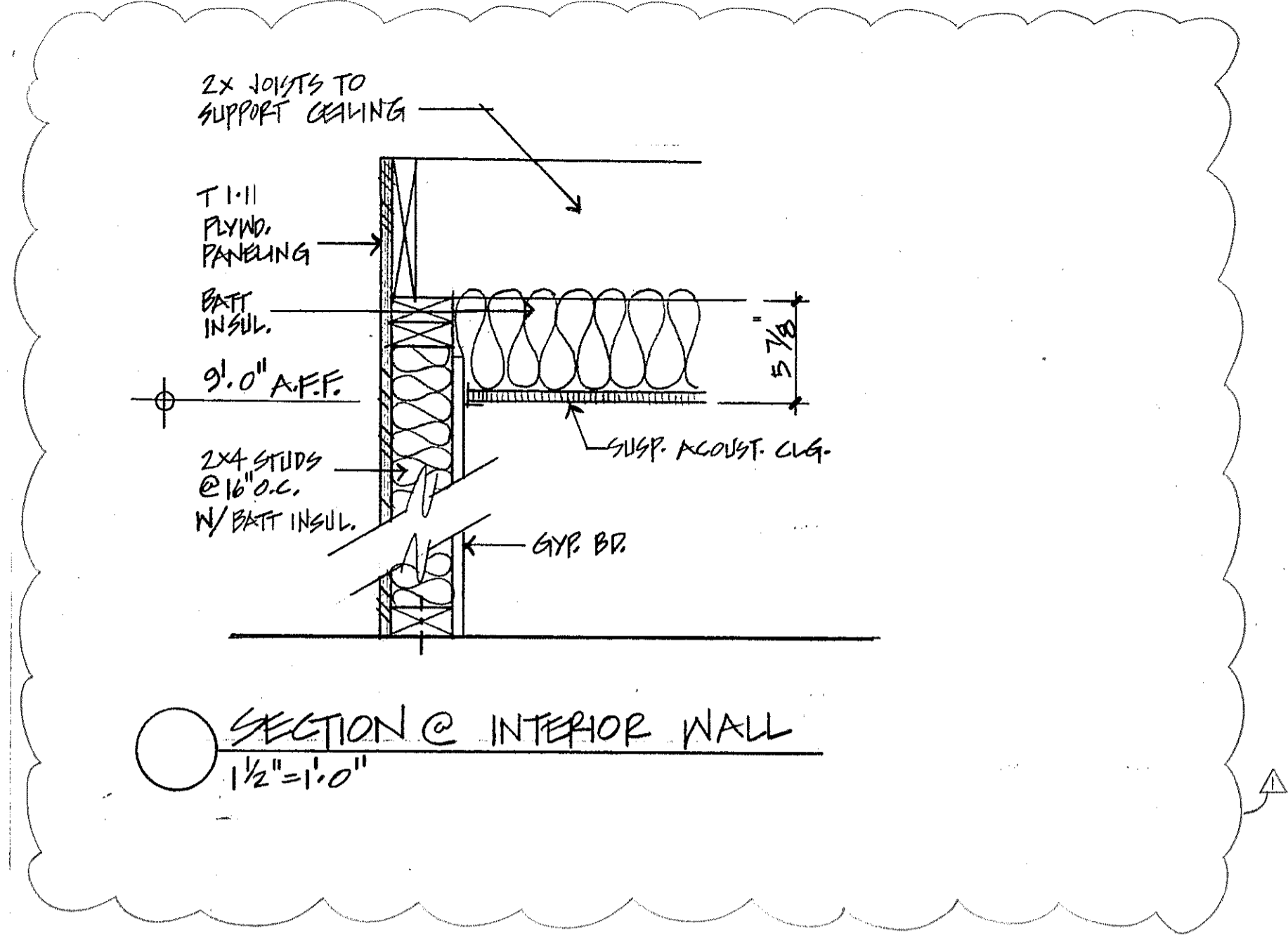
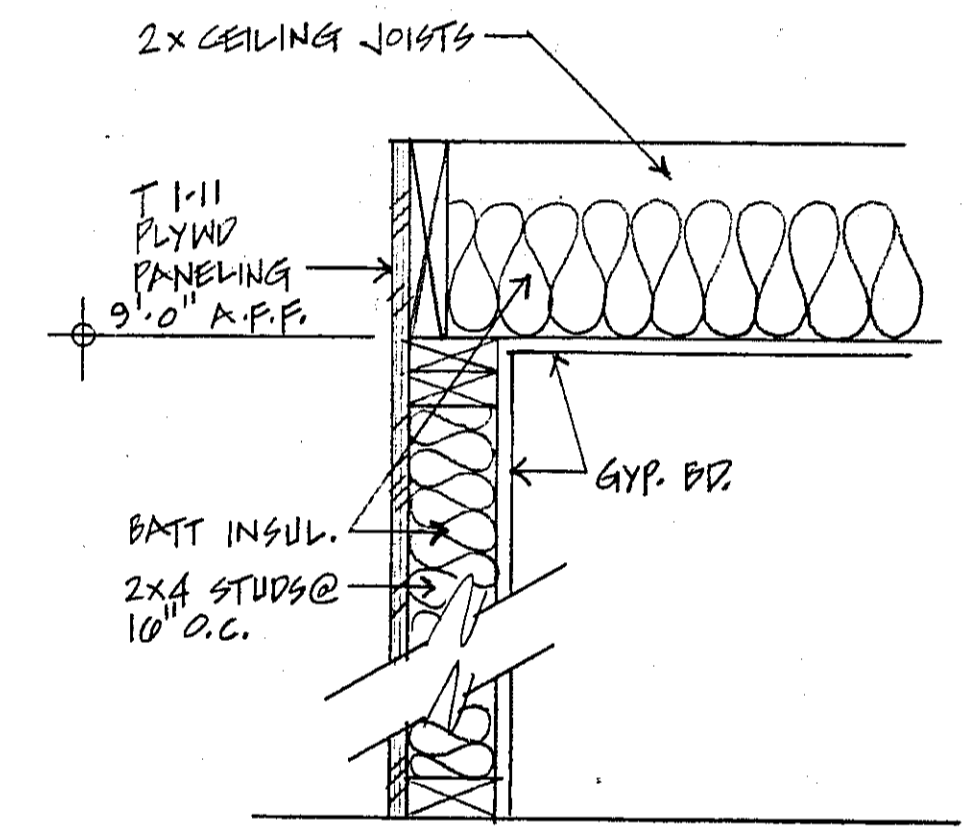


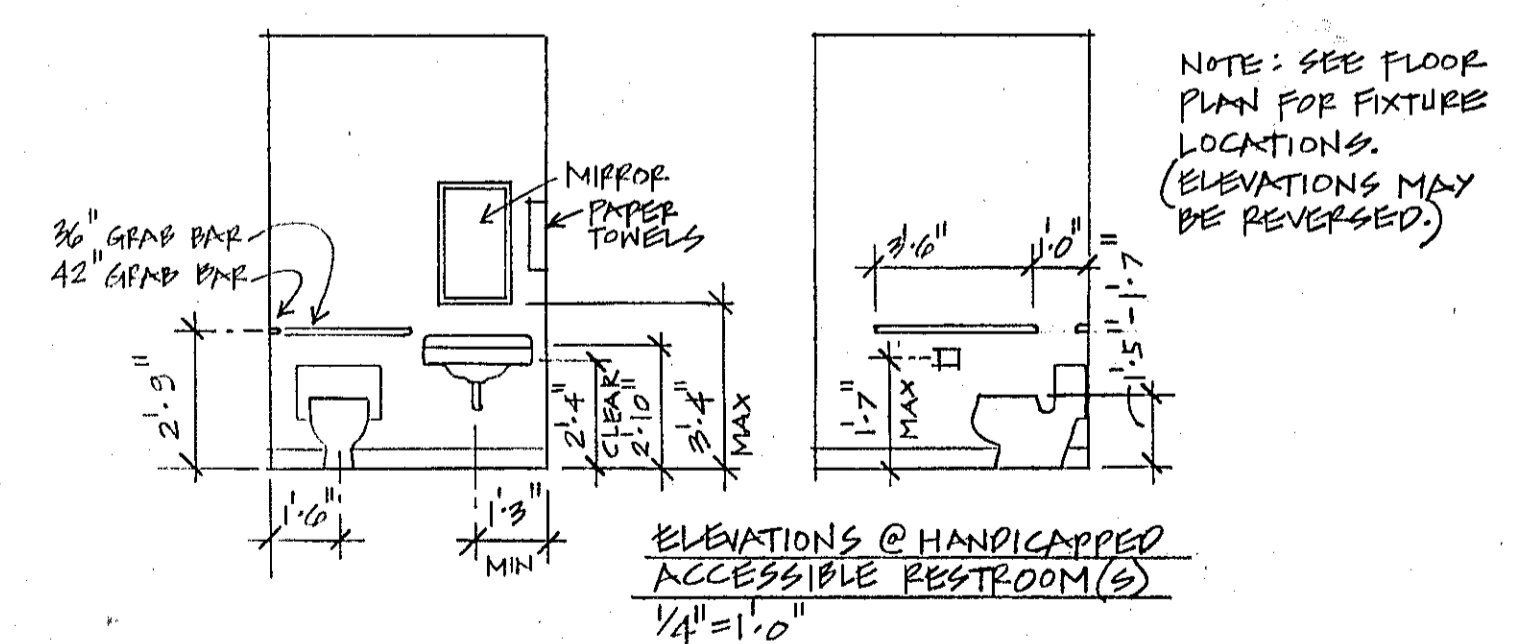
SECTION @ TENANT SEPARATION WALL
1/4" = 1'-0"



SECTION @ INTERIOR WALL
1/2" = 1'-0"

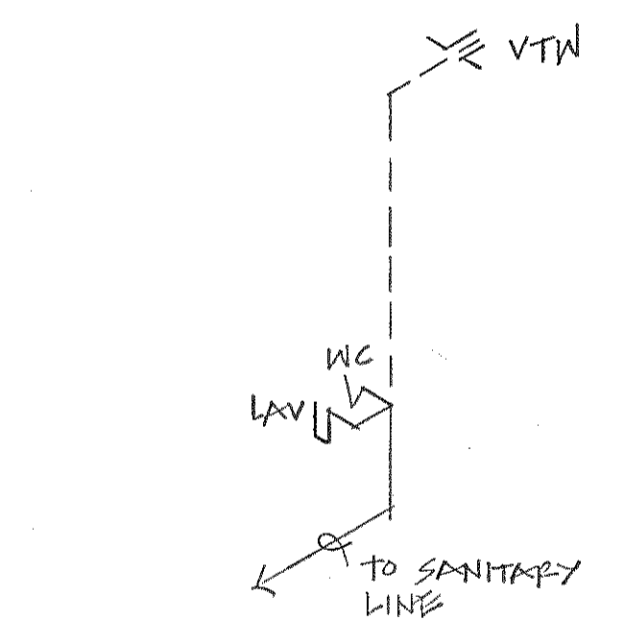


SECTION @ INTERIOR WALL
1/2" = 1'-0"

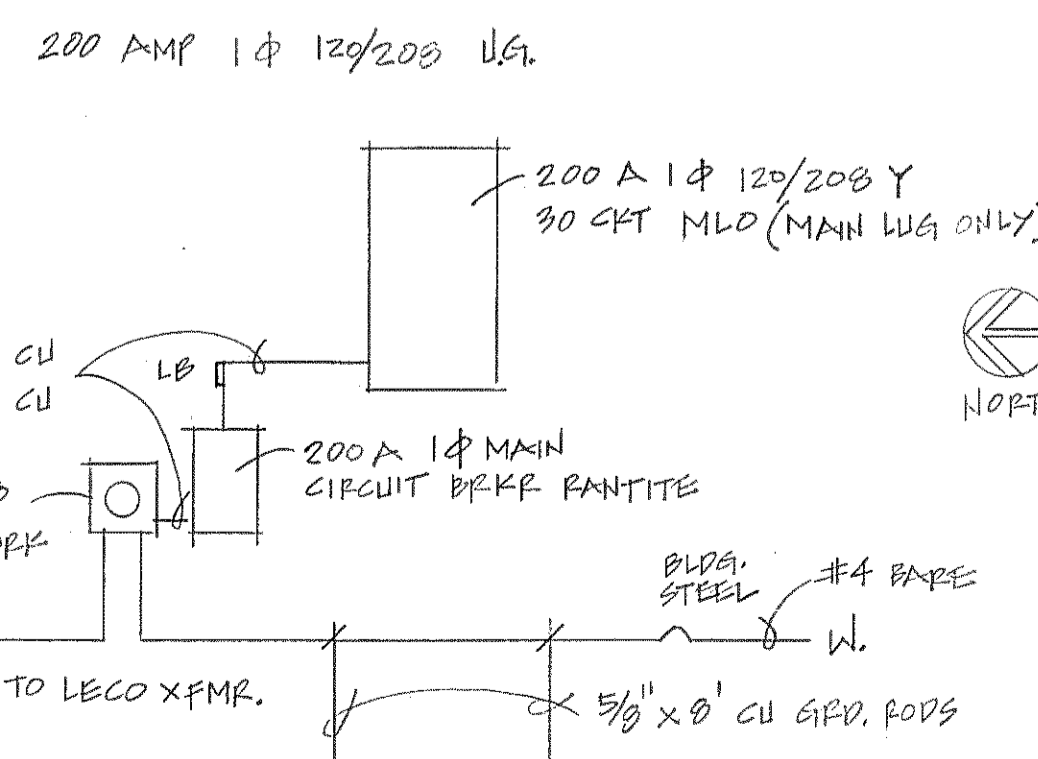


NOTE: SEE FLOOR PLAN FOR FIXTURE LOCATIONS. (ELEVATIONS MAY BE REVERSED.)

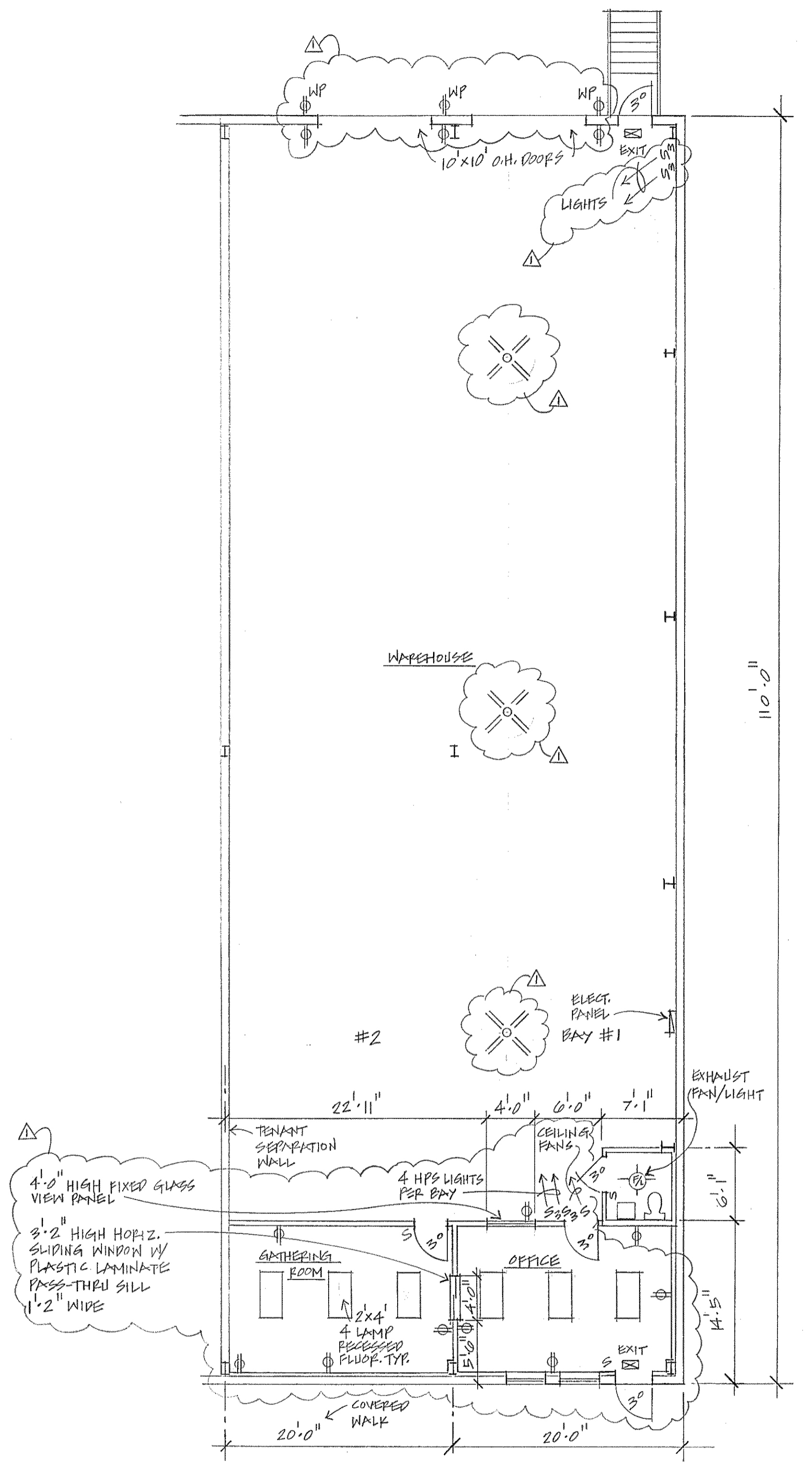
ELEVATIONS @ HANDICAPPED ACCESSIBLE RESTROOM(S)
1/4" = 1'-0"



SANITARY RISER DIAGRAM
NO SCALE



ELECT. RISER DIAGRAM
NO SCALE



FLOOR PLAN
1/8" = 1'-0"

AREA TABULATION:

FINISHED AREA	45 S.F.	610
WAREHOUSE AREA	4355	3781
TOTAL	4400	4400

NOTE: BOTTLED WATER TO BE PROVIDED BY TENANT

REV 10.23.05

4725 EAST LAKELAND COMMERCE PARKWAY
LUTHERN BUSINESS PARK
TENANT IMPROVEMENTS FOR KEEPER, INC.

DR. BY: JMM
CHKD. BY:
DATE: 9-1-05
SCALE:
PROJ. NO.: 05126
DWG. NO.:
SHT: 1 OF 1

Wallis
Murphy
Boydston
ARCHITECTS, INC.

110 South Kentucky Avenue, Atlanta, Georgia 30302
Phone: 404.525.3373
Fax: 404.525.3116
E-mail: wmb@wallismurphyboydston.com