

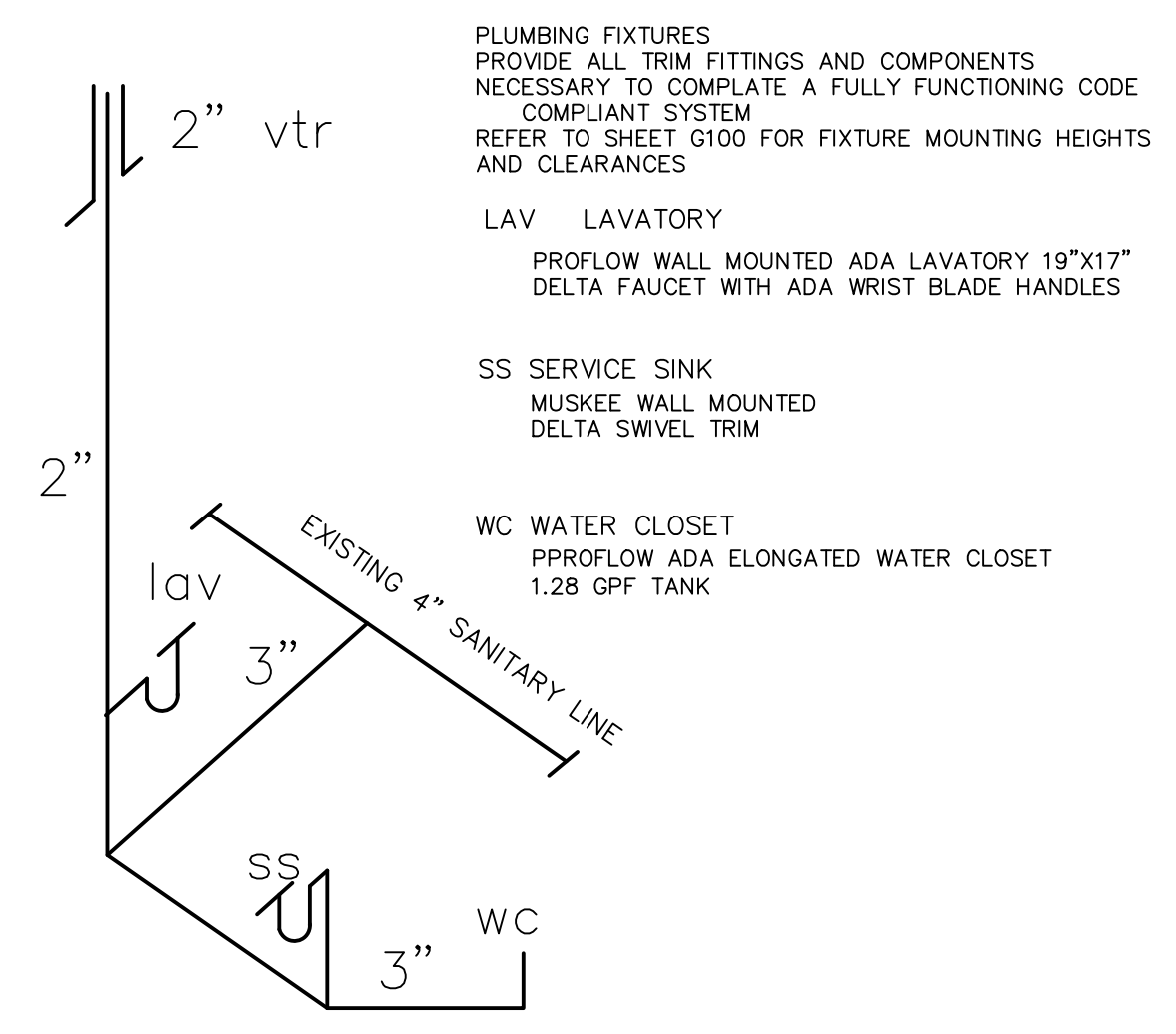
This item has been electronically signed and sealed by Victor Prebor AIA using a Digital Signature and date. Printed copies of this document are not considered signed and sealed and the signature must be verified on any electronic copies.

**BUILDING DATA:**

SQUARE FOOTAGES:	
UNIT 15	FINISHED AREA 218 SF
WAREHOUSE	902 SF
TOTAL SQUARE FOOTAGE 1,120 SF	
SQUARE FOOTAGES:	
UNIT 17	FINISHED AREA 218 SF
WAREHOUSE	902 SF
TOTAL SQUARE FOOTAGE 1,120 SF	

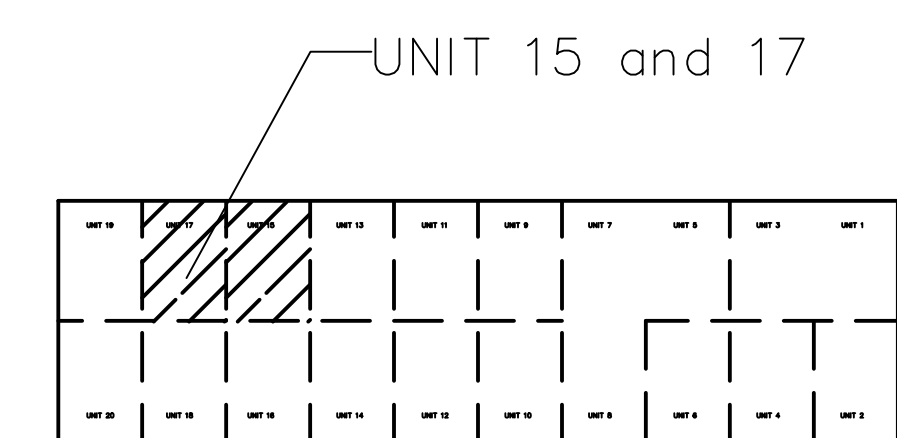
**SHEET GENERAL NOTES:**

- DESIGN OF MODIFICATIONS TO EXISTING FIRE SPRINKLER SYSTEM IS NOT IN THIS SCOPE AND SHALL BE BY OTHERS, AND MADE DURING CONSTRUCTION.
- VERIFY FLOOR FINISH AND BASE MATERIAL WITH LANDLORD.
- ELECTRICAL CONTRACTOR SHALL VERIFY ALL ELECTRICAL OUTLETS IN FIRE RATED ASSEMBLIES IN RATED TENANT WALLS. COORDINATE INSTALLATION DETAILS SPACING LIMITATIONS AND MODEL PRIOR TO INSTALLATION.
- SEE SHEET A-104 FOR DOOR SCHEDULE
- SEE SHEET FOR A-104 FINISH SCHEDULE



**PLUMBING RISER**

SANITARY RISER TO BE TYPICAL FOR BOTH UNITS 15 AND 17 REVERSE AT 17



**LOCATION MAP:**

VICTOR PREBOR ARCHITECTURE LLC  
 130 S MASSACHUSETTS AVE, SUITE 212, LAKELAND, FL 33801  
 863.255.7033 victor@prebor.com  
 AA26003300 A95639 ID5865  
 Florida A95639 ID5865  
 Victor M. Prebor AIA NCARB ID LEED AP  
 FORGUE General Contracting  
 Ruthven Airpark Center  
 LANDLORD IMPROVEMENTS units 15 and 17  
 3928 Anchuca Drive, Lakeland, FL 33811

FLOOR PLAN

171001

review approval permit revision  
02-06-2018

A-101