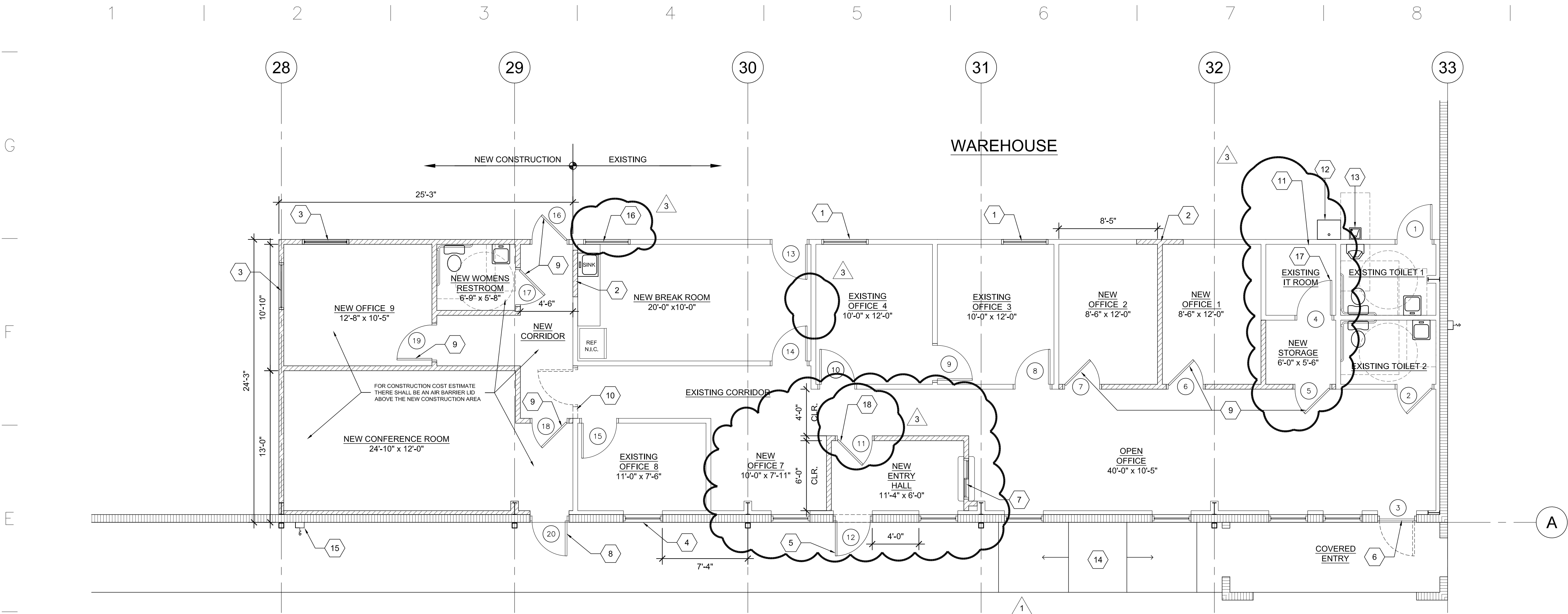
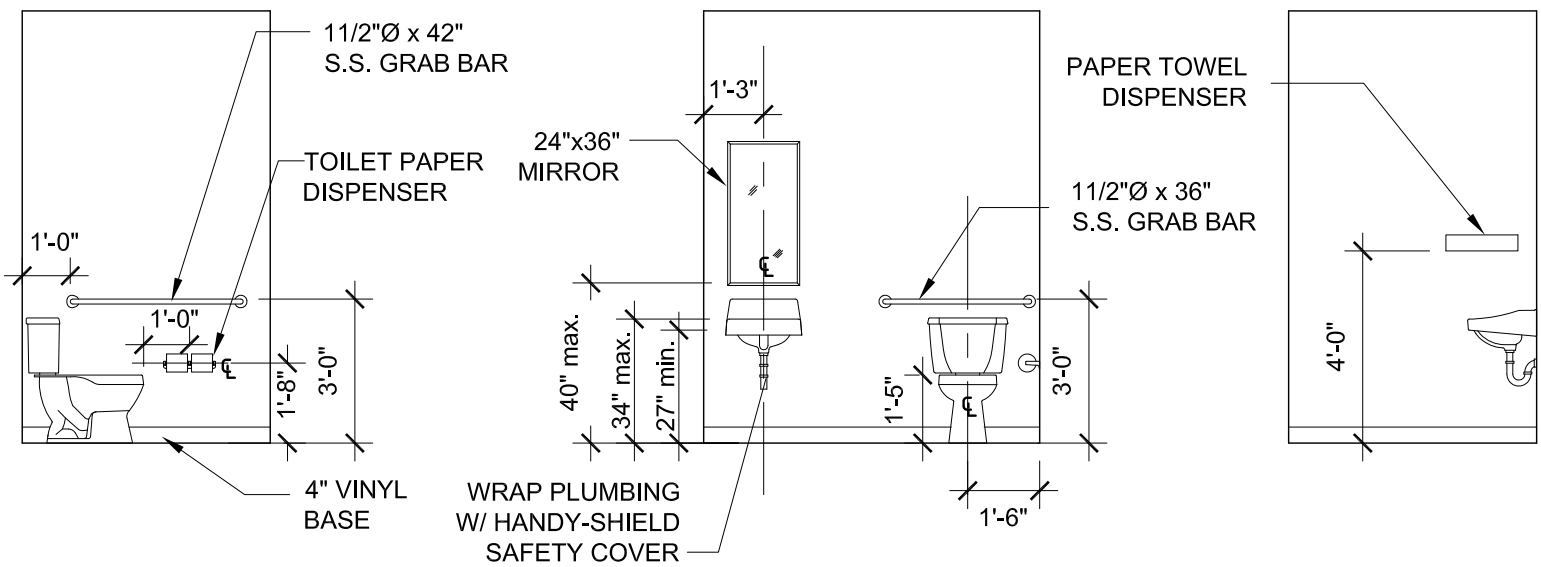


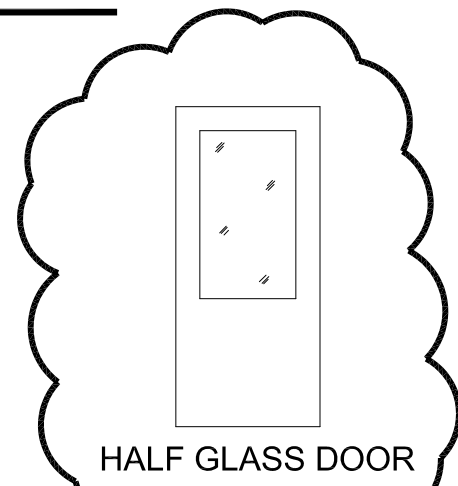
This document, together with the concepts and designs presented herein, on an instrument of service, is intended only for the specific purpose and client for which it was prepared. Review of and improper reliance on this document without contractor administration or written authorization and adaptation by Wallis Murphey Boyington Architects, Inc. shall be without liability to Wallis Murphey Boyington Architects, Inc.



1
A-401
OFFICE PLAN
3/16"=1'-0"



3
A-401
TYPICAL A.D.A. TOILET ROOM ELEVATIONS
1/4"=1'-0"



PLUMBING FIXTURE SCHEDULE

ITEM	MANUFACTURER	DESCRIPTION
WATER CLOSET	AMERICAN STANDARD	CADET 3 ELONGATED (A.D.A.)
LAVATORY	AMERICAN STANDARD	19 X 17 WALL HUNG DECLYN W/ GERBER WRIST BLADE HANDLES (A.D.A.)
KITCHEN SINK	DAYTON	2522SS SINGLE COMPARTMENT SINK WITH DELTA FAUCET

ROOM FINISH SCHEDULE

ROOM NAME	FLOOR		WALLS		CEILING			NOTES
	MATL	BASE	MATL	FIN	MATL	FIN	HGT.	
EXISTING TOILET 1	EX	-	EX	-	EX	-	EX	-
EXISTING TOILET 2	EX	-	EX	-	EX	-	EX	-
OPEN OFFICE	CPT	RUB	GB	PT	ACT	-	9'-0"	-
EXISTING IT ROOM	EX	-	EX	-	EX	-	EX	-
NEW STORAGE	CPT	RUB	GB	PT	ACT	-	9'-0"	-
NEW OFFICE 1	CPT	RUB	GB	PT	ACT	-	9'-0"	-
NEW OFFICE 2	CPT	RUB	GB	PT	ACT	-	9'-0"	-
EXISTING OFFICE 3	EX	-	EX	-	EX	-	EX	-
EXISTING OFFICE 4	EX	-	EX	-	EX	-	EX	-
NEW ENTRY HALL	CPT	RUB	GB	PT	ACT	-	9'-0"	-
NEW OFFICE 7	CPT	RUB	GB	PT	ACT	-	9'-0"	-
NEW BREAK ROOM	CPT	RUB	GB	PT	ACT	-	9'-0"	-
EXISTING OFFICE 8	EX	-	EX	-	EX	-	EX	-
NEW CORRIDOR	CPT	RUB	GB	PT	ACT	-	9'-0"	-
NEW WOMENS RESTROOM	VCT	RUB	GB	PT	GB	PT	9'-0"	-
NEW OFFICE 9	CPT	RUB	GB	PT	ACT	-	9'-0"	-
NEW CONFERENCE ROOM	CPT	RUB	GB	PT	ACT	-	9'-0"	-
WAREHOUSE	EX	-	EX	-	EX	-	EX	-

DOOR SCHEDULE

NO.	WIDTH	HGT	THK	TYPE	DOOR MATL	FINISH	FRAME MATL	FINISH	HARD	NOTE
1	EXIST.	-	-	-	-	-	-	-	-	
2	EXIST.	-	-	-	-	-	-	-	-	
3	EXIST.	-	-	-	-	-	-	-	-	
4	3'-0"	6'-8"	1 3/4"	-	SCW	NAT	WD	PT	-	
5	3'-0"	6'-8"	1 3/4"	-	SCW	NAT	WD	PT	-	
6	3'-0"	6'-8"	1 3/4"	-	SCW	NAT	WD	PT	-	
7	3'-0"	6'-8"	1 3/4"	-	SCW	NAT	WD	PT	-	
8	EXIST.	-	-	-	-	-	-	-	-	
9	EXIST.	-	-	-	-	-	-	-	-	
10	EXIST.	-	-	-	-	-	-	-	-	
11	3'-0"	6'-8"	1 3/4"	-	SCW	NAT	WD	PT	-	HALF GLASS
12	3'-0"	7'-0"	-	-	ST	ALUM	ALUM	-	-	
13	EXIST.	-	-	-	-	-	-	-	-	
14	EXIST.	-	-	-	-	-	-	-	-	
15	EXIST.	-	-	-	-	-	-	-	-	
16	3'-0"	6'-8"	1 3/4"	-	SCW	NAT	WD	PT	-	
17	3'-0"	6'-8"	1 3/4"	-	SCW	NAT	WD	PT	-	
18	3'-0"	6'-8"	1 3/4"	-	SCW	NAT	WD	PT	-	
19	3'-0"	6'-8"	1 3/4"	-	SCW	NAT	WD	PT	-	
20	EXIST.	-	-	-	-	-	-	-	-	
21	EXIST.	-	-	-	-	-	-	-	-	
22	EXIST.	-	-	-	-	-	-	-	-	
23	EXIST.	-	-	-	-	-	-	-	-	
24	EXIST.	-	-	-	-	-	-	-	-	
25	EXIST.	-	-	-	-	-	-	-	-	
26	EXIST.	-	-	-	-	-	-	-	-	
27	EXIST.	-	-	-	-	-	-	-	-	
28	EXIST.	-	-	-	-	-	-	-	-	
29	EXIST.	-	-	-	-	-	-	-	-	
30	EXIST.	-	-	-	-	-	-	-	-	
31	EXIST.	-	-	-	-	-	-	-	-	
32	EXIST.	-	-	-	-	-	-	-	-	

AREA TABULATION

EXISTING OFFICE AREA	1,819
NEW OFFICE AREA	811
TOTAL	2,430
WAREHOUSE	17,570
GROSS TOTAL	20,000 S/F

GENERAL SHEET NOTES

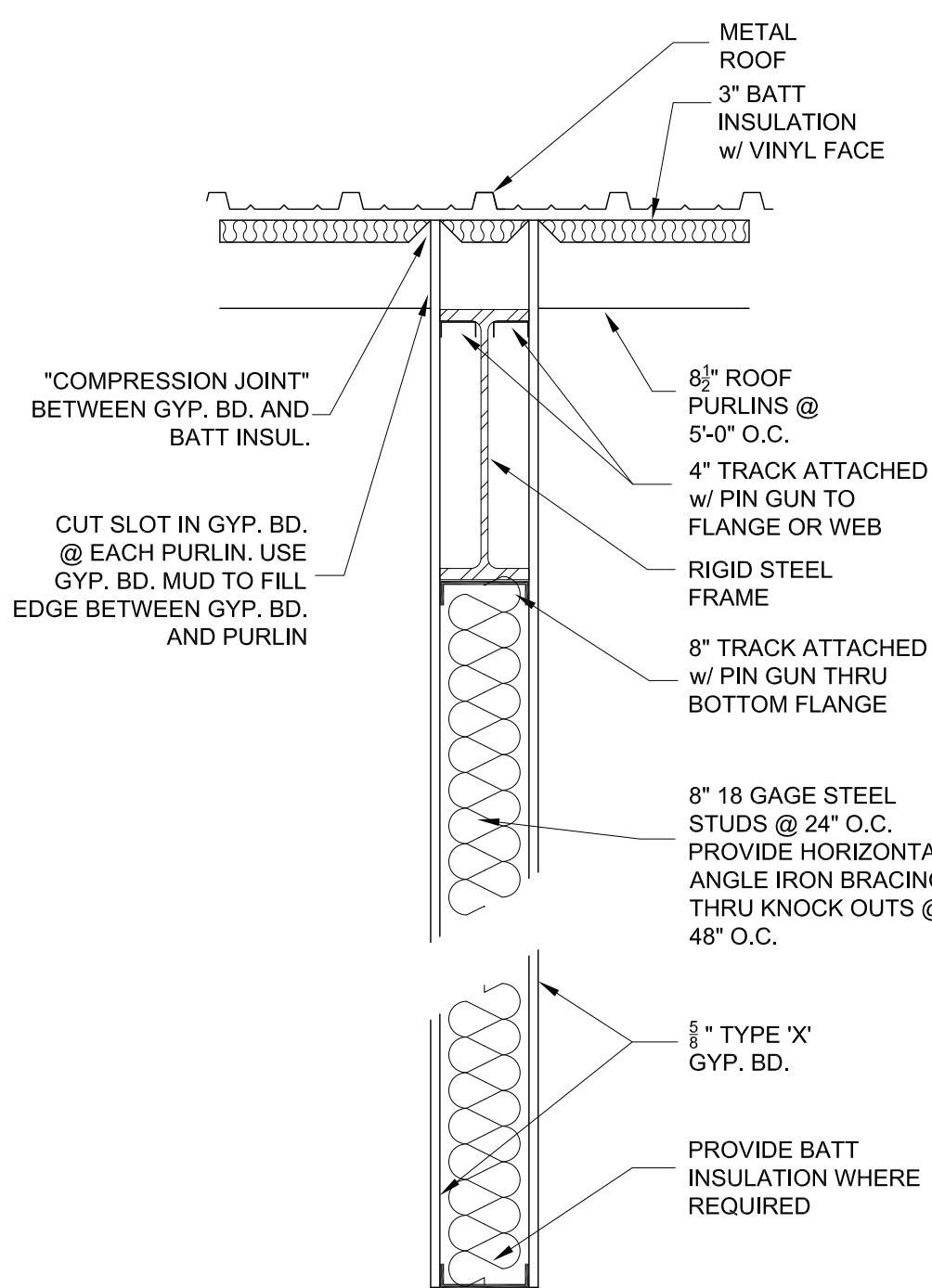
- ALL DOORS SHALL HAVE LEVER HANDLES TO MEET ADA.
- DESIGN OF MODIFICATIONS TO EXISTING FIRE SPRINKLER SYSTEM IS NOT IN THIS SCOPE AND SHALL BE BY OTHERS, AND MADE DURING CONSTRUCTION
- ALL ELECTRICAL WORK SHALL COMPLY WITH N.E.C. & APPLICABLE LOCAL CODES.
- VERIFY FLOOR FINISH AND BASE MATERIAL WITH LANDLORD.
- LOCATE AIR HANDLER AND DUCTS IN CONFINED AREA TO MINIMIZE VIEW FROM WAREHOUSE.

SHEET NOTES

- EXISTING WINDOW TO REMAIN
- REMOVE EXISTING WINDOW OR DOOR AND INFILL WITH WALL
- NEW VIEW PANEL TO BE CONSTRUCTED
- INSTALL NEW WINDOW TO MATCH EXISTING
- ADD NEW STOREFRONT ENTRANCE DOOR
- LOCKED DOOR
- NEW SLIDING WINDOW
- EXISTING DOOR TO REMAIN
- NEW DOOR TO BE CONSTRUCTED
- REMOVE EXISTING DOOR AND PORTION OF WALL
- WALL MOUNTED EQUIPMENT, OUTLET, DATA, AND/OR ELECTRICAL SWITCH TO REMAIN AS IS
- EXISTING SERVICE SINK
- EXISTING DRINKING FOUNTAIN
- PREVIOUSLY PERMITTED ACCESSIBLE ROUTE WITH RAMP UP
- NEW RESTROOM EXHAUST FAN DUCT TO EXTERIOR WALL THRU DAMPER HOOD
- REPLACE EXISTING SLIDING WINDOW WITH NEW VIEW PANEL
- NEW DOOR WITH LOCK
- NEW HALF GLASS DOOR

WALL TYPE LEGEND

- EXISTING PARTITION TO REMAIN
- EXISTING PARTITION TO BE REMOVED
- NEW PARTITION:



2
A-401
1 HR TENANT SEPARATION WALL SECTION
NTS

FIRE RESISTANCE RATINGS - ANSI/UL263 (BXUV) - Continued
Design No. U419
Non Bearing Wall Rating - 1, 2, 3 or 4 Hr (See Items 3 & 4)

- Floor and Ceiling Runners** - Channel shaped, fabricated from min 25 MSG corrosion-protected steel, min width to accommodate stud size, with min 1 in. long legs, attached to floor and ceiling with fasteners 24 in. OC max.
- Steel Studs** - Channel shaped, fabricated from min 25 MSG corrosion - protected steel, min width as indicated under Item 4, min 1-1/4 in. flanges and 1/4 in. return, spaced a max of 24 in. OC. Studs to be cut 3/8 to 1/4 in. less than assembly height.
- Batts and Blankets** - (Required as indicated under Item 4) - Mineral wool batts, friction fitted between studs and runners. Min nom thickness as indicated under Item 4. See Batts and Blankets (BKNV or BZJZ) Categories for names of Classified companies.
3A. Batts and Blankets - Placed in stud cavities, any glass fiber or mineral wool insulation bearing the UL Classification Marking as to Surface Burning Characteristics and/or Fire Resistance. See Batts and Blankets (BKNV or BZJZ) Categories for names of Classified companies.
- Wallboard, Gypsum*** - Gypsum panels with beveled, square or tapered edges, applied vertically or horizontally. Vertical joints centered over studs and staggered one stud cavity on opposite sides of studs. Vertical joints in adjacent layers (multilayer systems) staggered one stud cavity. Horizontal edge joints and horizontal butt joints on opposite side of studs staggered a min of 12 in. Horizontal edge joints and horizontal butt joints in adjacent layers (multilayer systems) staggered a min of 12 in. The thickness and number of layers for the 1 hr, 2 hr, 3 hr and 4 hr ratings are as follows:

Wallboard Protection on Each side of Wall

Rating	Min. Stud	Gyp. Thkns.	Insulation
1	3-1/2	1 layer, 5/8"	Optional
2	2-1/2	1 layer, 1/2"	1-1/2"
2	1-5/8	2 layers, 1/2"	Optional
2	1-5/8	2 layers, 5/8"	Optional
3	3-1/2	1 layer, 3/4"	3"
3	1-5/8	3 layers, 1/2"	Optional
3	1-5/8	2 layers, 3/4"	Optional
4	1-5/8	4 layers, 1/2"	Optional
4	2-1/2	2 layers, 3/4"	2"

- Canadian Gypsum Co. - 1/2 in. thick Type C, WRC or IP-X2; 5/8 in. thick Type SCX, SHX, WRX, IP-X1, AR, C, WRC or IP-X2; 3/4 in. thick ULTRACODE or Type IP-X3
United States Gypsum Co. - 1/2 in. thick Type C, WRC or IP-X2; 5/8 in. thick Type SCX, SHX, WRX, IP-X1, AR, C, WRC or IP-X2; 3/4 in. thick ULTRACODE or Type IP-X3
Yeso Panamericano SA de CV - 1/2 in. thick Type C, WRC or IP-X2; 5/8 in. thick Type SCX, SHX, WRX, IP-X1, AR, C, WRC or IP-X2; 3/4 in. thick ULTRACODE or Type IP-X3.
- Fasteners** - Type S or S-12 self-drilling, self-tapping steel screws used to attach panels to studs (Item 2) or furring channels (Item 6).
Single layer systems: 1 in. long for 1/2 and 5/8 in. thick panels or 1-1/4 in. long for 3/4 in. thick panels, spaced 8 in. OC when panels are applied horizontally, or 12 in. OC when panels are applied vertically. Two layer systems: First layer - 1 in. long for 1/2 and 5/8 in. thick panels or 1-1/4 in. long for 3/4 in. thick panels, spaced 16 in. OC. Second layer - 1-5/8 in. long for 1/2 in. thick panels or 2-1/4 in. long for 3/4 in. thick panels, spaced 16 in. OC with screws offset 8 in. from first layer.
Three-layer systems: First layer - 1 in. long for 1/2 in. thick panels, spaced 24 in. OC. Second layer - 1-5/8 in. long 1/2 in. thick panels, spaced 24 in. OC. Third layer - 2 - 1/4 in. long 1/2 in. thick panels, spaced 12 in. OC. Screws offset min 6 in. from layer below. Four-layer systems: First layer - 1 in. long for 1/2 in. thick panels, spaced 24 in. OC. Second layer - 1-5/8 in. long for 1/2 in. thick panels, spaced 24 in. OC. Third layer - 2 - 1/4 in. long for 1/2 in. thick panels, spaced 24 in. OC. Fourth layer - 2 - 5/8 in. long for 1/2 in. thick panels, spaced 12 in. OC. Screws offset min 6 in. from layer below.
 - Furring Channels** - (Optional, not shown, for single or double layer systems) - Resilient furring channels fabricated from min 25 MSG corrosion-protected steel, spaced vertically a max of 24 in. OC. Flange portion attached to each intersecting stud with 1/2 in. long Type S-12 panhead steel screws.
 - Joint Tape and Compound** - Vinyl or casein, dry or premixed joint compound applied in two coats to joints and screw heads of outer layers. Paper tape, nom 2 in. wide, embedded in first layer of compound over all joints of outer panels.
 - Siding, Brick or Stucco** - Aluminum, vinyl or steel siding, brick veneer or stucco, meeting the requirements of local code agencies, installed over gypsum panels. Brick veneer attached to studs with corrugated metal wall ties attached to each stud with steel screws, not more than each sixth course of brick.
 - Caulking and Sealants*** - A bead of acoustical sealant applied around the partition perimeter for sound control.
United States Gypsum Co. - Type AS
*Bearing the UL Classification Marking

Wallis
Murphey
Boyington
ARCHITECTS, INC.

110 South Kentucky Avenue
Lakeland, Florida 33801
P 863.687.3573
F 863.683.6370
www.wmbarchs.com
Email mail@wmbarchs.com
Corp. Lic. No. AAC001165

CONSULTANTS:

SEAL: J. MICHAEL MURPHEY, Fla. Certificate No. 9346
STEVEN J. BOYINGTON, Fla. Certificate No. 9652

DATE:

PROJECT NAME:

THE
Ruthvens

3919 Air Park Drive
LAKELAND, FL

TENANT:

OLE MEXICAN
FOODS

BAY NUMBERS:

25-32

ISSUED DATES:

MARK	DATE	DESCRIPTION
3	5-9-2012	REVISION 3
2	4-24-12	BLDG DEPT COMMENTS
1	4-19-12	REVISION 1 ENTRY HALL

DR. BY: EAC

CHKD. BY: JMM

DATE: 04/05/12

SCALE: AS NOTED

PROJ. NO.: 05229

DWG TITLE:

ENLARGED FLOOR PLAN,
DETAILS, AND SCHEDULES

DWG. No.:

A-401

PERMIT SET - APRIL 5, 2012